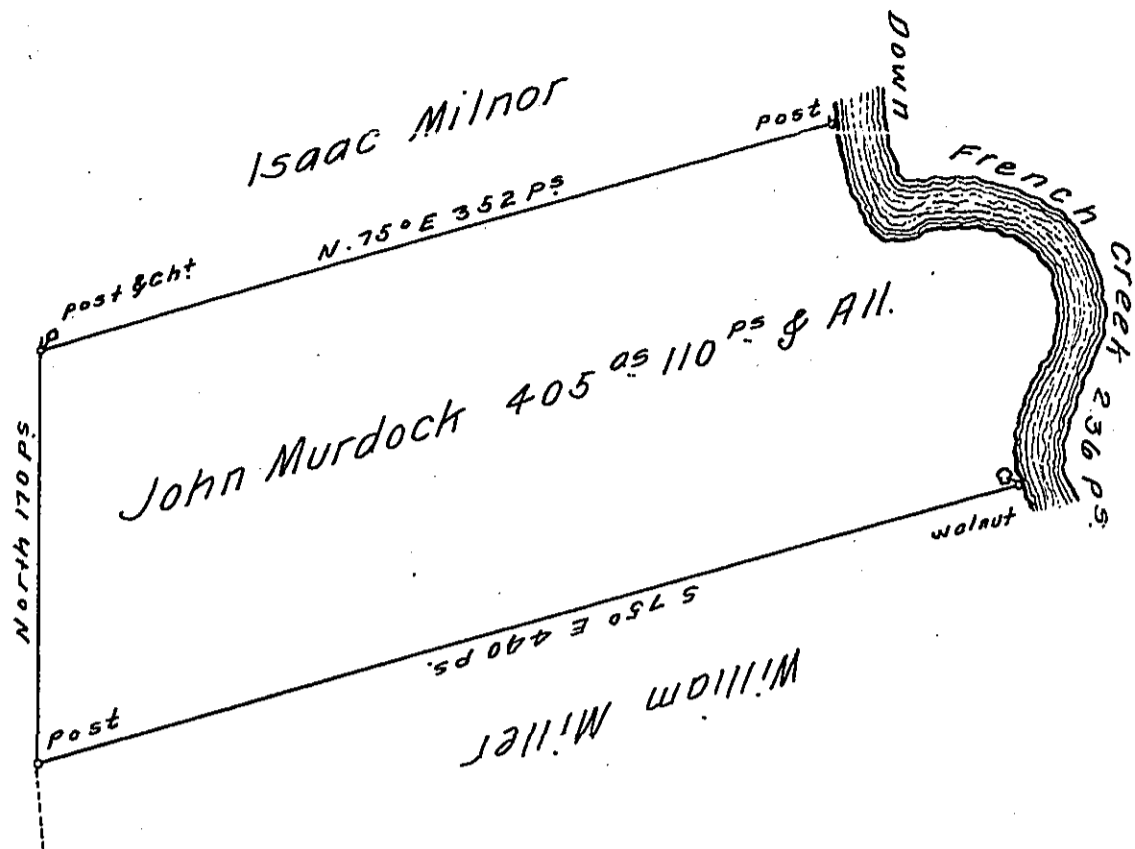


River Courses beg. 9  
 Post S. 12° E. 15  
 S. 13° E. 19  
 S. 44° E. 20  
 N. 70° E. 28  
 S. 67° E. 34  
 S. 55° E. 23  
 S. 2° E. 20  
 S. 26° W. 40  
 S. 4° E. 30  
 S. 27° E. 7.  
 = 236 perch =



Situate on adjoining the West Side of French Creek in  
 Allegheny County Containing 405 Acres and 110 per<sup>s</sup> and the  
 Allowance of Six & Cent for Roads &c Surveyed the 2<sup>d</sup> day  
 of June 1794 On a Warrant dated the 13<sup>th</sup> day of April 1792.

W<sup>m</sup> Power D<sup>y</sup> S<sup>r</sup>

To Daniel Brodhead Esq<sup>r</sup> }  
 Surveyor General. }

IN TESTIMONY that the above is a copy of the original remaining on file in  
 the Department of Internal Affairs of Pennsylvania, made  
 conformably to an Act of Assembly approved the 16th day of  
 February, 1833, I have hereunto set my Hand and caused  
 the Seal of said Department to be affixed at Harrisburg,  
 this seventeenth day of May 1911.

*Henry Howell*  
 Secretary of Internal Affairs.